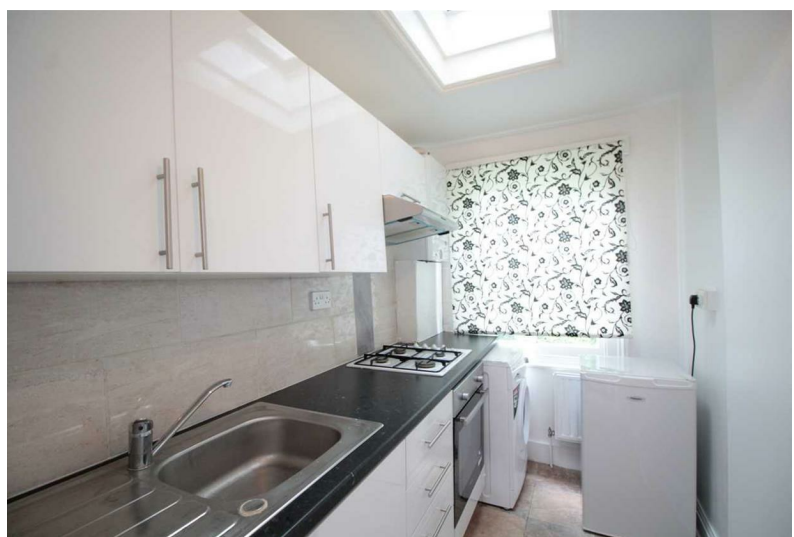
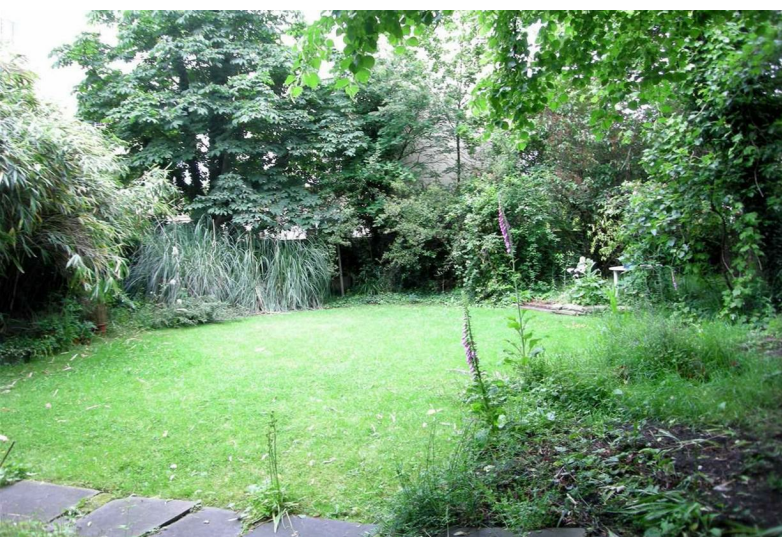


# Lansdowne Way | Stockwell, SW8



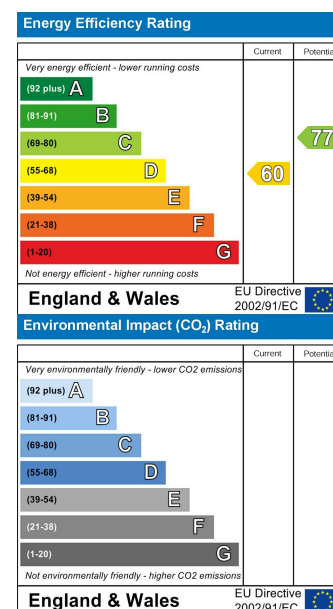
**£1,400 Per Month**

- One bedroom flat • Shared garden • Spacious accommodation • Close to Stockwell tube • Leasehold covenants may apply • On street residents permit parking available on application (TBC)

# Lansdowne Way | Stockwell, SW8



A lower ground floor one bedroom maisonette with a large shared garden within this imposing period property in Stockwell conservation area. Located moments from Stockwell tube station, the flat is perfect for Northern & Victoria lines commuters. The flat features a galley style kitchen, bathroom, spacious lounge and a double bedroom off it. Perfect for a professional couple and available immediately as unfurnished. Please note photos were taken prior to the current tenancy.



These particulars are designed to provide a guideline only and cannot be relied upon as a statement of fact. The description represents the opinion of the author and is not intended to provide false or misleading information. Any prospective purchaser should make further checks on its accuracy. All measurements are approximate and floorplans are for representation only.



**Eden Harper**  
3 Arlington Parade, Brixton Hill, Brixton, SW2 1RH  
**0207 274 3111**  
brixsales@edenharper.com  
www.edenharper.com